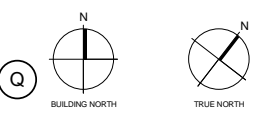


All dimension to be verified on site before producing shop drawings or commencing any work. Do not scale. The copyright of this drawing remains with Warren and Mahoney Architects Ltd.

**Revisions**  
A 06/06/14 DEVELOPED DESIGN

**Notes**



**Consultants**  
CLENDON BURNS & PARK  
Structural Engineer  
PACIFIC CONSULTANTS  
Mechanical Engineer  
PACIFIC CONSULTANTS  
Fire Engineer  
PACIFIC CONSULTANTS  
Electrical Engineer

**Client**  
WANGANUI DISTRICT COUNCIL

**Warren and Mahoney Architects Ltd**  
87 The Terrace  
PO Box 10390  
Wellington 6143  
New Zealand  
Phone + 64 4 473 8130  
Registered Architects and Designers  
www.warrenandmahoney.com

**Project Title**  
Sarjeant Gallery  
Queens Park, Wanganui

**Drawing Title**  
GA FLOOR FINISHES  
BASEMENT

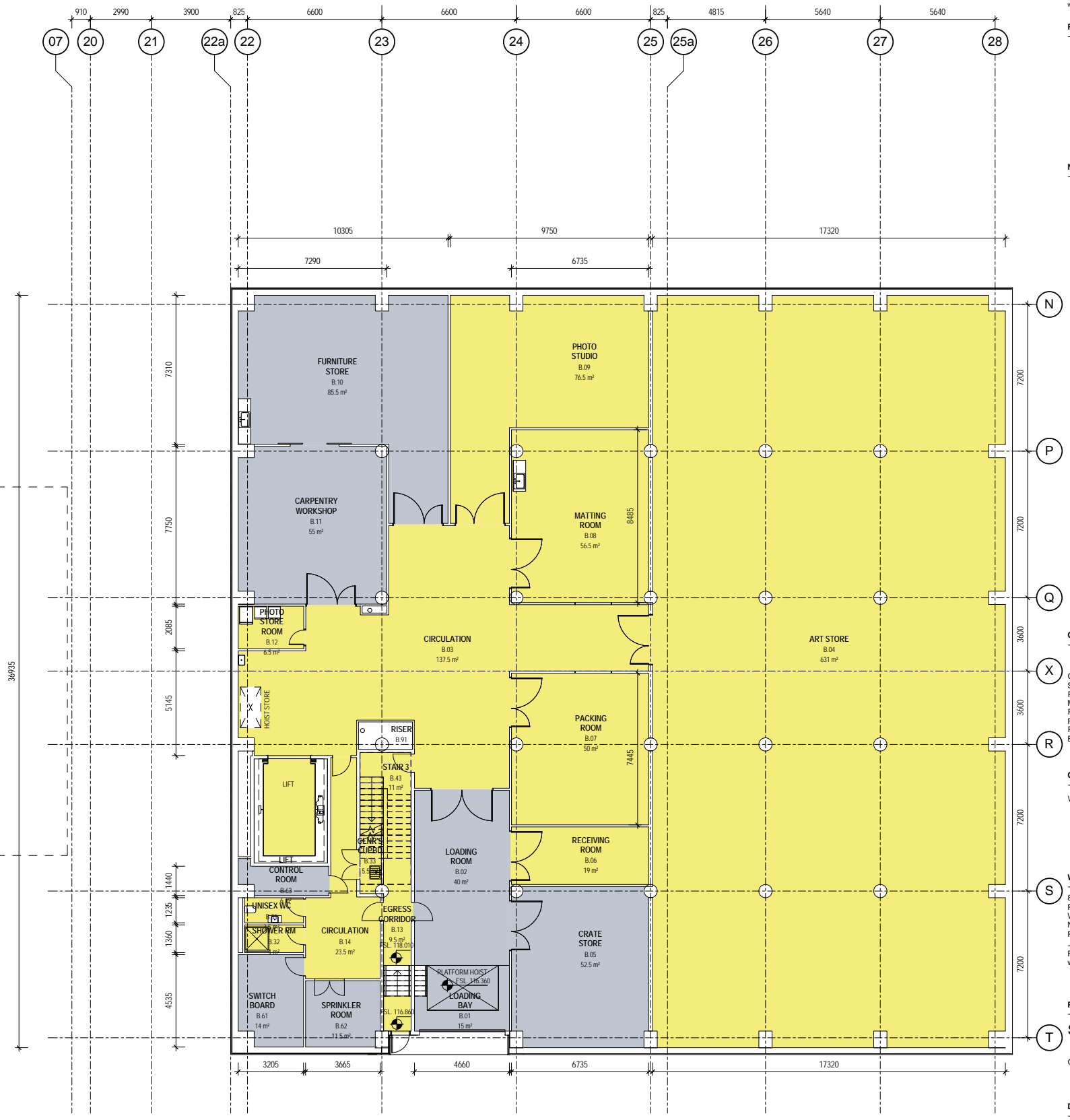
**Drawing Status**  
FOR INFORMATION

**Drawing Details**  
Scale 1:125 @ A1  
Date 06/06/2014  
Job No 6548  
Drawn Author  
Checked Checker

**Drawing No**  
A1-150

**Revision**  
A

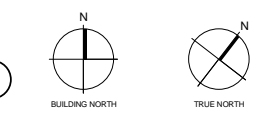
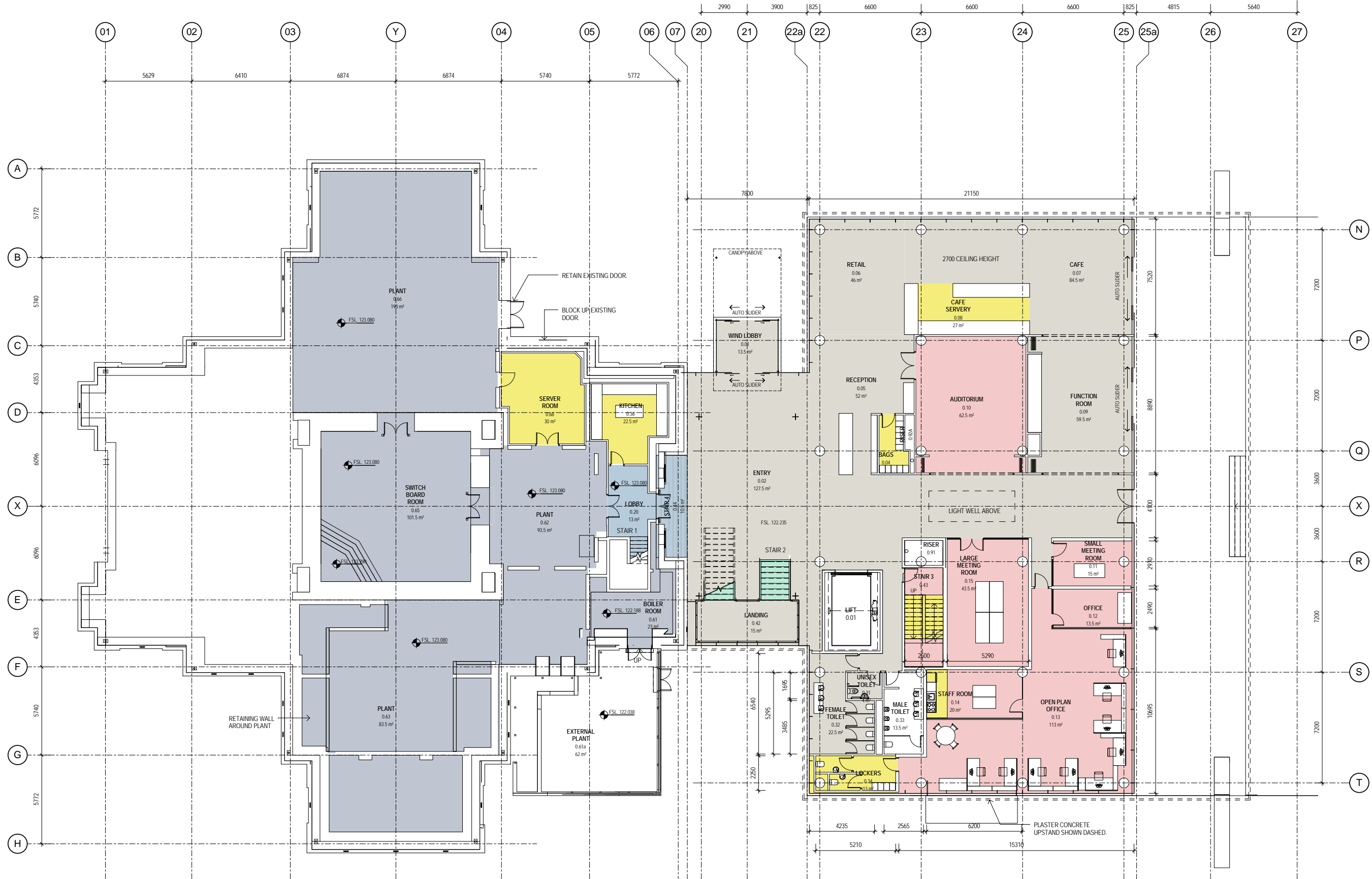
**WARREN AND MAHONEY**



EXISTING SARJEANT GALLERY

**1 FLOOR FINISHES PLAN - NEW BASEMENT**  
A1-302 1:125

- FLOOR FINISH LEGEND**
- ACoustic RUBBER
  - AMERICAN OAK T&G
  - CARPET TILE
  - EXISTING MATAI FLOORING RELAID
  - LINOLEUM
  - NEW MATAI FLOORING
  - PAVING PAINT
  - PLASTER CONCRETE
  - SELECTED STONE TILES ADHESIVE FIXED



**Consultants**  
 CLENDON BURNS & PARK  
 Structural Engineer  
 PACIFIC CONSULTANTS  
 Mechanical Engineer  
 PACIFIC CONSULTANTS  
 Fire Engineer  
 PACIFIC CONSULTANTS  
 Electrical Engineer

**Client**  
 WANGANUI DISTRICT COUNCIL

**Warren and Mahoney Architects Ltd**  
 87 The Terrace  
 PO Box 10390  
 Wellington 6143  
 New Zealand  
 Phone + 64 4 473 8130  
 Registered Architects and Designers  
 www.warrenandmahoney.com

**Project Title**  
 Sarjeant Gallery  
 Queens Park, Wanganui

**Drawing Title**  
 GA FLOOR FINISHES  
 LEVEL 0

**Drawing Status**  
 FOR INFORMATION

**Drawing Details**  
 Scale 1:125 @ A1  
 Date 23/06/2014  
 Job No 6548  
 Drawn Author  
 Checked Checker

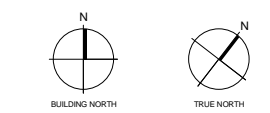
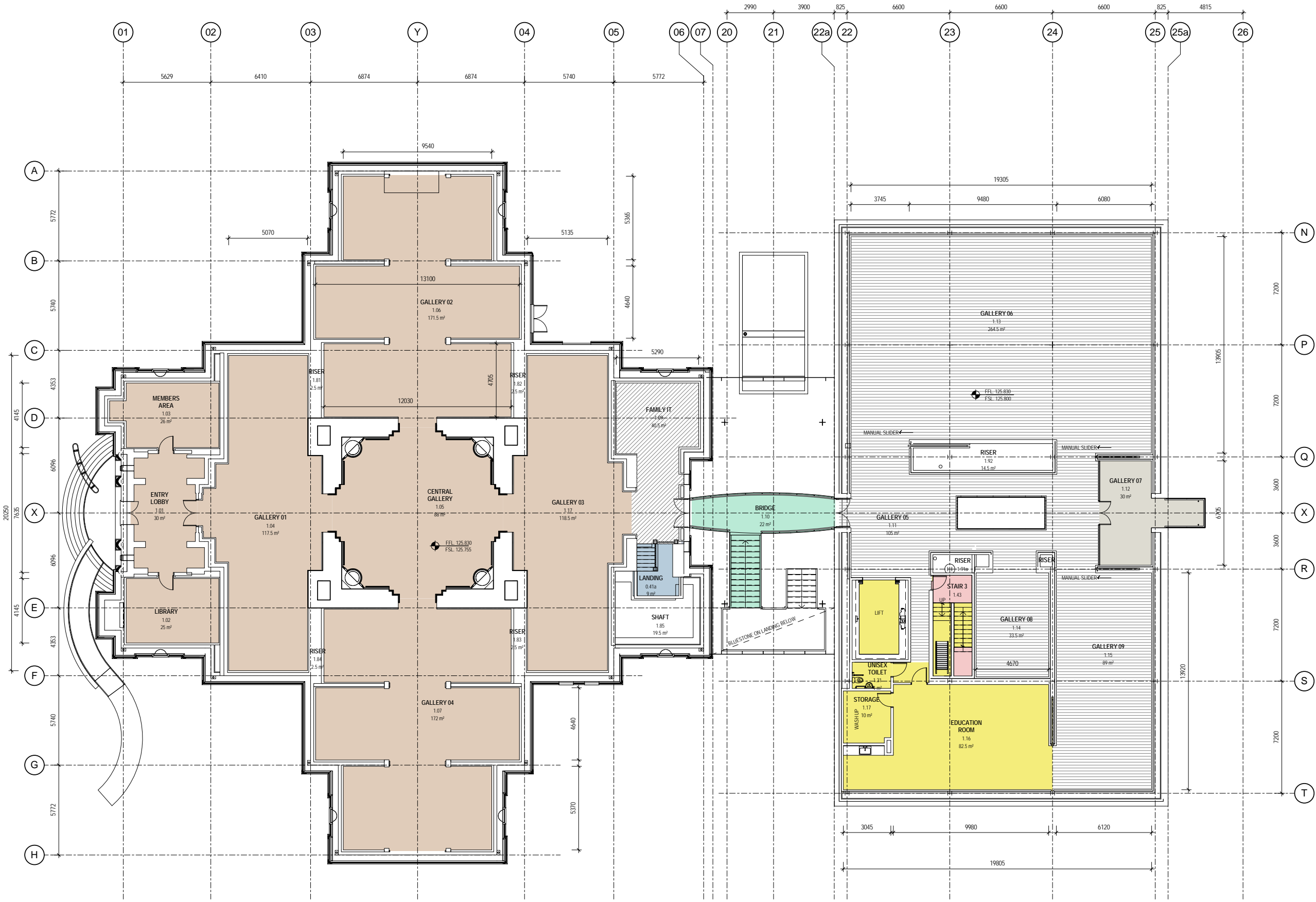
**Drawing No**  
 A1-151

**TOTAL AREA OF FLOOR FINISH**  
 SELECTED STONE - LEVEL 0 & TERRACE 840m<sup>2</sup>

**NOTES:**  
 SELECTEC STONE TILES 600 x 600 x 20mm  
 ADHESIVE FIX TO CONCRETE SLAB.  
 SELECTED STONE TILES ON TERRACE TO BE 600 x  
 600 x 20mm CAST ON 50mm CONCRETE SLAB ON  
 PEDESTALS OVER MEMBRANE.  
 DASHED LINE AROUND BUILDING INDICATING  
 PLASTER CONCRETE UPSTAND.

- FLOOR FINISH LEGEND**
- ACQUSTIC RUBBER
  - AMERICAN OAK T&G
  - CARPET TILE
  - EXISTING MATAI FLOORING RELAID
  - UNOLEUM
  - NEW MATAI FLOORING
  - PAVING PAINT
  - PLASTER CONCRETE
  - SELECTED STONE TILES ADHESIVE  
FIXED

**1 FLOOR FINISHES PLAN - LEVEL 0**  
 A1-300 1:125



**Consultants**  
CLENDON BURNS & PARK  
Structural Engineer  
PACIFIC CONSULTANTS  
Mechanical Engineer  
PACIFIC CONSULTANTS  
Fire Engineer  
PACIFIC CONSULTANTS  
Electrical Engineer

**Client**  
WANGANUI DISTRICT COUNCIL

**Warren and Mahoney Architects Ltd**  
87 The Terrace  
PO Box 10390  
Wellington 6143  
New Zealand  
Phone + 64 4 473 8130  
Registered Architects and Designers  
www.warrenandmahoney.com

**Project Title**  
Sarjeant Gallery  
Queens Park, Wanganui

**Drawing Title**  
GA FLOOR FINISHES  
LEVEL 1

**Drawing Status**  
FOR INFORMATION

**Drawing Details**  
Scale 1:125 @ A1  
Date 06/06/2014  
Job No 6548  
Drawn Author  
Checked Checker

**Drawing No**  
A1-152

**TOTAL AREA OF FLOOR FINISH**

AMERICAN OAK T&G	489.5m²
EXISTING MATAI FLOORING RELAID	819.8m²
SELECTED STONE - LEVEL 1	30m²

**NOTES:**  
20mm AMERICAN OAK T&G ADHESIVE FIXED TO CONCRETE SLAB OVER ACOUSTIC UNDERLAY. FLOORING TO BE RUN IN DIRECTION OF HATCHED LINE.  
SELECTED STONE TILES 600 x 600 x 20mm ADHESIVE FIX TO CONCRETE SLAB.  
EXISTING MATAI FLOORING UPLIFTED AND RELAID, SANDED AND CLEAR FINISHED.  
NEW MATAI FLOORING SANDED AND CLEAR FINISHED.

**FLOOR FINISH LEGEND**

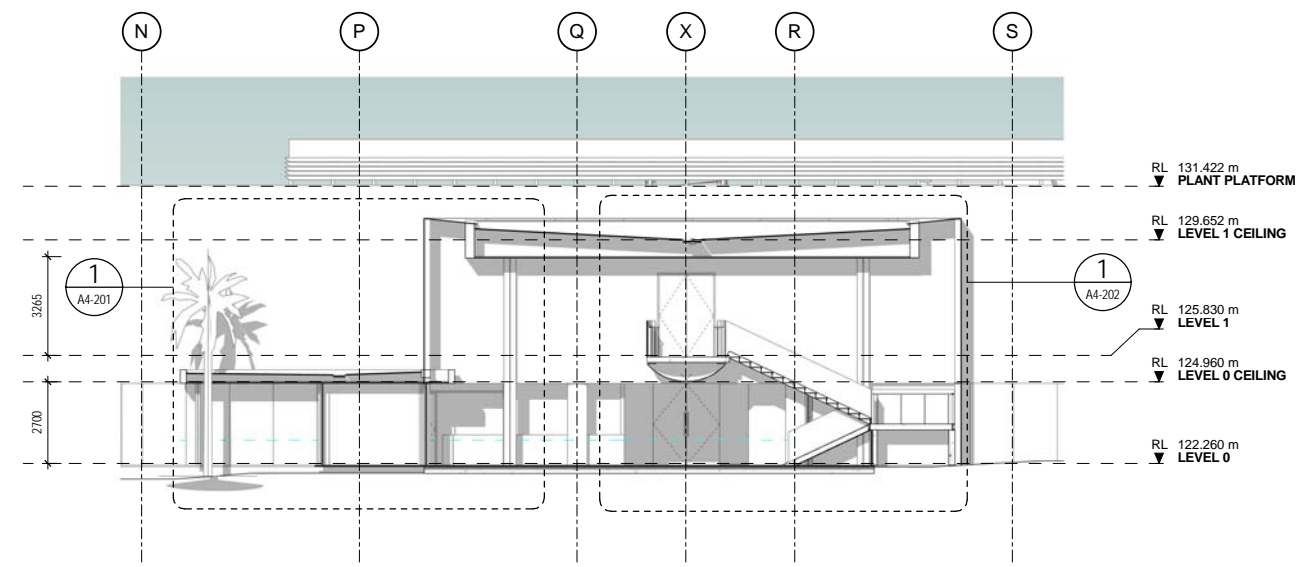
[Green Hatched]	ACOUSTIC RUBBER
[Brown Hatched]	AMERICAN OAK T&G
[Red Hatched]	CARPET TILE
[Tan Hatched]	EXISTING MATAI FLOORING RELAID
[Yellow Hatched]	LINOLEUM
[Blue Hatched]	NEW MATAI FLOORING
[Grey Hatched]	PAVING PAINT
[Light Blue Hatched]	PLASTER CONCRETE
[Dark Blue Hatched]	SELECTED STONE TILES ADHESIVE FIXED

**1 FLOOR FINISHES PLAN - LEVEL 1**  
A1-300 1:125

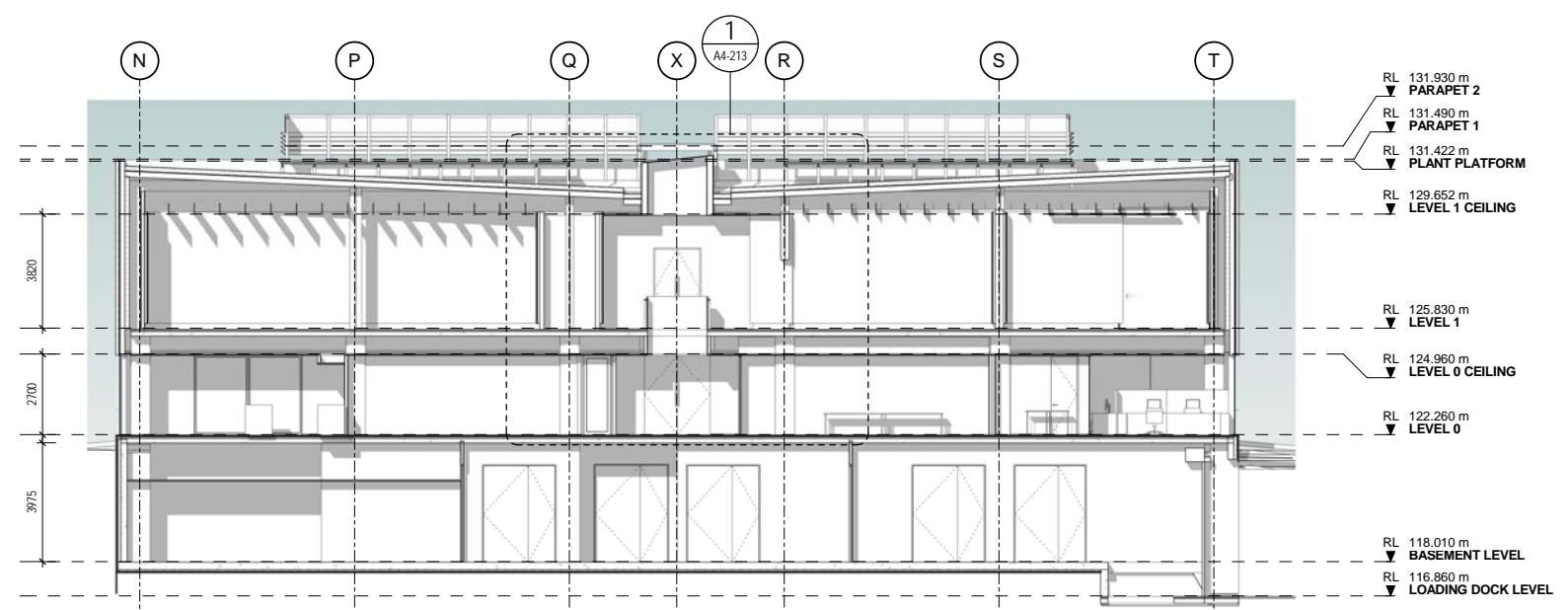
Revisions

A 06/06/14 DEVELOPED DESIGN

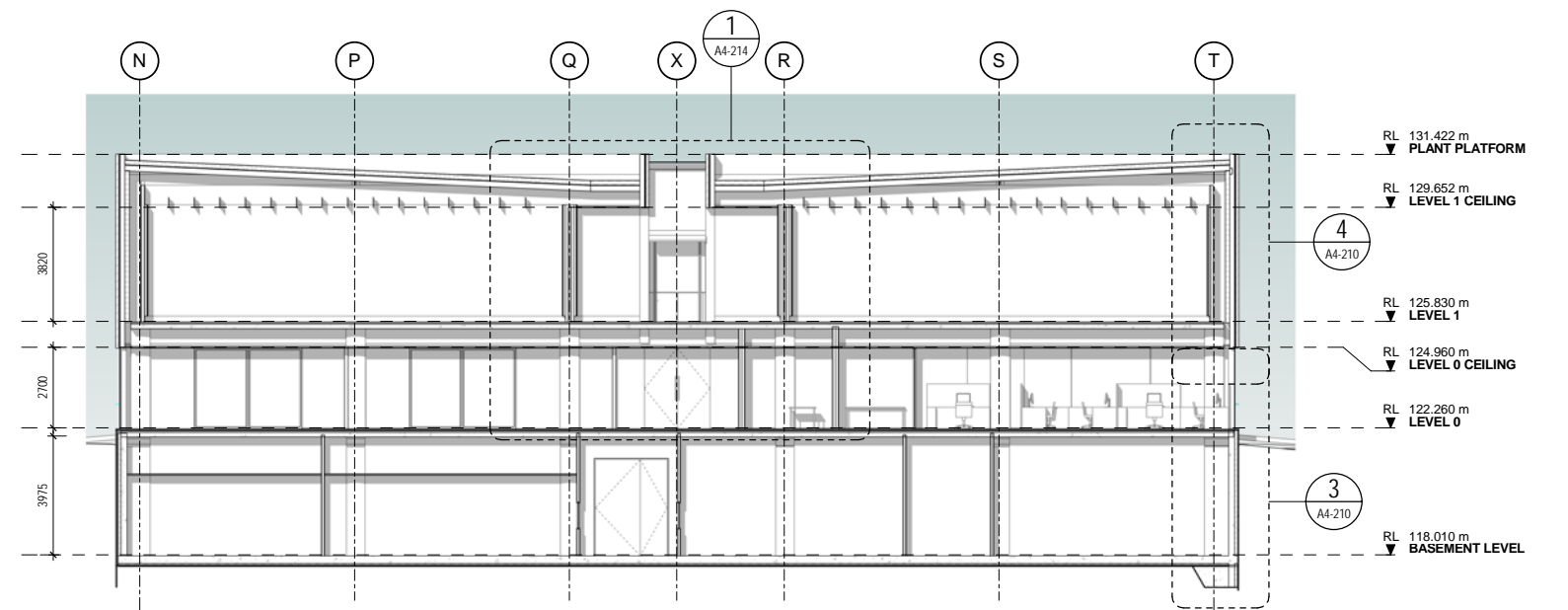
Notes



**F** SECTION F EAST WEST LINK  
A1-101 1:125



**G** SECTION G EAST WEST NEW BUILDING  
A1-100 1:125



**H** SECTION H EAST WEST NEW BUILDING  
A1-100 1:125

Consultants

CLENDON BURNS & PARK  
Structural Engineer  
PACIFIC CONSULTANTS  
Mechanical Engineer  
PACIFIC CONSULTANTS  
Fire Engineer  
PACIFIC CONSULTANTS  
Electrical Engineer

Client

WANGANUI DISTRICT COUNCIL

Warren and Mahoney Architects Ltd

87 The Terrace  
PO Box 10390  
Wellington 6143  
New Zealand  
Phone + 64 4 473 8130

Registered Architects and Designers  
www.warrenandmahoney.com

Project Title

Sarjeant Gallery

Queens Park, Wanganui

Drawing Title

GA SECTION  
SHEET 03

Drawing Status

FOR INFORMATION

Drawing Details

Scale	1:125 @ A1
Date	06/06/2014
Job No	6548
Drawn	Author
Checked	Checker

Drawing No

A1-352

Revision

(A)

ROOM AREA SCHEDULE			
ROOM NO.	ROOM NAME	Level	AREA Designed
B.09	PHOTO STUDIO	BASEMENT LEVEL	76 m <sup>2</sup>
B.10	FURNITURE STORE	BASEMENT LEVEL	86 m <sup>2</sup>
B.12	PHOTO STORE ROOM	BASEMENT LEVEL	7 m <sup>2</sup>
B.01	LOADING BAY	BASEMENT LEVEL	15 m <sup>2</sup>
B.61	SWITCH BOARD	BASEMENT LEVEL	14 m <sup>2</sup>
B.62	SPRINKLER ROOM	BASEMENT LEVEL	12 m <sup>2</sup>
B.51	LIFT	BASEMENT LEVEL	18 m <sup>2</sup>
B.91	RISER	BASEMENT LEVEL	3 m <sup>2</sup>
B.04	ART STORE	BASEMENT LEVEL	631 m <sup>2</sup>
B.08	MATTING ROOM	BASEMENT LEVEL	56 m <sup>2</sup>
B.05	CRATE STORE	BASEMENT LEVEL	52 m <sup>2</sup>
B.07	PACKING ROOM	BASEMENT LEVEL	50 m <sup>2</sup>
B.11	CARPENTRY WORKSHOP	BASEMENT LEVEL	55 m <sup>2</sup>
B.03	CIRCULATION	BASEMENT LEVEL	137 m <sup>2</sup>
B.32	SHOWER RM	BASEMENT LEVEL	4 m <sup>2</sup>
B.63	LIFT CONTROL ROOM	BASEMENT LEVEL	6 m <sup>2</sup>
B.06	RECEIVING ROOM	BASEMENT LEVEL	19 m <sup>2</sup>
B.31	UNISEX WC	BASEMENT LEVEL	4 m <sup>2</sup>
B.02	LOADING ROOM	BASEMENT LEVEL	40 m <sup>2</sup>
B.13	EGRESS CORRIDOR	BASEMENT LEVEL	10 m <sup>2</sup>
B.43	STAIR 3	BASEMENT LEVEL	11 m <sup>2</sup>
B.33	CLNR'S CUPBD	BASEMENT LEVEL	5 m <sup>2</sup>
B.14	CIRCULATION	BASEMENT LEVEL	23 m <sup>2</sup>
B.92	RISER	BASEMENT LEVEL	0 m <sup>2</sup>
BASEMENT LEVEL			1335 m <sup>2</sup>
0.15	LARGE MEETING ROOM	LEVEL 0	44 m <sup>2</sup>
0.10	AUDITORIUM	LEVEL 0	62 m <sup>2</sup>
0.09	FUNCTION ROOM	LEVEL 0	59 m <sup>2</sup>
0.08	CAFE SERVERY	LEVEL 0	27 m <sup>2</sup>
0.07	CAFE	LEVEL 0	84 m <sup>2</sup>
0.06	RETAIL	LEVEL 0	46 m <sup>2</sup>
0.14	STAFF ROOM	LEVEL 0	20 m <sup>2</sup>
0.05	RECEPTION	LEVEL 0	52 m <sup>2</sup>
0.33	MALE TOILET	LEVEL 0	13 m <sup>2</sup>
0.32	FEMALE TOILET	LEVEL 0	23 m <sup>2</sup>
0.31	UNISEX TOILET	LEVEL 0	4 m <sup>2</sup>
0.34	LOCKERS	LEVEL 0	13 m <sup>2</sup>
0.51	LIFT	LEVEL 0	18 m <sup>2</sup>
0.04	BAGS	LEVEL 0	6 m <sup>2</sup>
0.91	RISER	LEVEL 0	4 m <sup>2</sup>
0.36	KITCHEN	LEVEL 0	23 m <sup>2</sup>
LEVEL 0			499 m <sup>2</sup>
0.44	STAIR 4	EX. BASEMENT LEVEL	10 m <sup>2</sup>
0.42	LANDING	EX. BASEMENT LEVEL	15 m <sup>2</sup>
0.65	SWITCH BOARD ROOM	EX. BASEMENT LEVEL	102 m <sup>2</sup>
0.61	BOILER ROOM	EX. BASEMENT LEVEL	23 m <sup>2</sup>
0.13	OPEN PLAN OFFICE	EX. BASEMENT LEVEL	113 m <sup>2</sup>
0.12	OFFICE	EX. BASEMENT LEVEL	14 m <sup>2</sup>
0.11	SMALL MEETING ROOM	EX. BASEMENT LEVEL	15 m <sup>2</sup>
0.92A	RISER	EX. BASEMENT LEVEL	2 m <sup>2</sup>

ROOM AREA SCHEDULE			
ROOM NO.	ROOM NAME	Level	AREA Designed
0.01	WIND LOBBY	EX. BASEMENT LEVEL	14 m <sup>2</sup>
0.68	SERVER ROOM	EX. BASEMENT LEVEL	30 m <sup>2</sup>
0.66	PLANT	EX. BASEMENT LEVEL	190 m <sup>2</sup>
0.62	PLANT	EX. BASEMENT LEVEL	93 m <sup>2</sup>
0.63	PLANT	EX. BASEMENT LEVEL	83 m <sup>2</sup>
0.43	STAIR 3	EX. BASEMENT LEVEL	16 m <sup>2</sup>
0.20	LOBBY	EX. BASEMENT LEVEL	13 m <sup>2</sup>
0.02	ENTRY	EX. BASEMENT LEVEL	127 m <sup>2</sup>
0.61a	EXTERNAL PLANT	EX. BASEMENT LEVEL	62 m <sup>2</sup>
0.92B	RISER	EX. BASEMENT LEVEL	1 m <sup>2</sup>
0.03	CENTRAL GALLERY	EX. BASEMENT LEVEL	113 m <sup>2</sup>
0.35	UNISEX TOILET	EX. BASEMENT LEVEL	13 m <sup>2</sup>
EX. BASEMENT LEVEL			1050 m <sup>2</sup>
1.12	GALLERY 07	LEVEL 1	30 m <sup>2</sup>
1.13	GALLERY 06	LEVEL 1	265 m <sup>2</sup>
1.31	UNISEX TOILET	LEVEL 1	4 m <sup>2</sup>
1.15	GALLERY 09	LEVEL 1	89 m <sup>2</sup>
1.14	GALLERY 08	LEVEL 1	34 m <sup>2</sup>
1.16	EDUCATION ROOM	LEVEL 1	82 m <sup>2</sup>
1.11	GALLERY 05	LEVEL 1	105 m <sup>2</sup>
1.10	BRIDGE	LEVEL 1	22 m <sup>2</sup>
1.91a	RISER	LEVEL 1	4 m <sup>2</sup>
1.92	RISER	LEVEL 1	14 m <sup>2</sup>
1.85	SHAFT	LEVEL 1	20 m <sup>2</sup>
1.05	CENTRAL GALLERY	LEVEL 1	88 m <sup>2</sup>
1.17	GALLERY 03	LEVEL 1	119 m <sup>2</sup>
1.06	GALLERY 02	LEVEL 1	172 m <sup>2</sup>
1.04	GALLERY 01	LEVEL 1	118 m <sup>2</sup>
1.01	ENTRY LOBBY	LEVEL 1	30 m <sup>2</sup>
1.02	LIBRARY	LEVEL 1	25 m <sup>2</sup>
1.03	MEMBERS AREA	LEVEL 1	26 m <sup>2</sup>
1.09	FAMILY IT	LEVEL 1	41 m <sup>2</sup>
0.41a	LANDING	LEVEL 1	9 m <sup>2</sup>
1.17	STORAGE	LEVEL 1	10 m <sup>2</sup>
1.07	GALLERY 04	LEVEL 1	172 m <sup>2</sup>
1.51	LIFT	LEVEL 1	18 m <sup>2</sup>
1.43	STAIR 3	LEVEL 1	16 m <sup>2</sup>
1.84	RISER	LEVEL 1	2 m <sup>2</sup>
1.81	RISER	LEVEL 1	2 m <sup>2</sup>
1.82	RISER	LEVEL 1	2 m <sup>2</sup>
1.83	RISER	LEVEL 1	2 m <sup>2</sup>
0.91b	RISER	LEVEL 1	1 m <sup>2</sup>
0.27d	Room	LEVEL 1	0 m <sup>2</sup>
LEVEL 1			1522 m <sup>2</sup>
2.62	PLANT PLATFORM B	ROOF AREAS	102 m <sup>2</sup>
2.61	PLANT PLATFORM A	ROOF AREAS	102 m <sup>2</sup>
ROOF AREAS			205 m <sup>2</sup>
Grand total			4610 m <sup>2</sup>